

Merkur 2

Microwave motion detector
for automatic doors

Intelligent, precise, versatile

- **Optimal flow of persons:**
The homogenous radar field with SMD+ function detects the smallest movements
- **Versatile usable:**
Practical adjustments for any type of doors, inside and outside
- **Short commissioning time:**
Pre-programmed comfort settings and electronically adjustable dual field planar module
- **Energy-saving:**
Avoids involuntary openings of the door by means of direction recognition and blanking-out of cross traffic

Merkur 2

Microwave motion detector for automatic doors

The all-rounder

Thanks to its extremely high versatility, Merkur 2 leads the way and can be used on virtually any type of automatic door. With its totally reliable detection, Merkur 2 provides a smooth flow of people and also ensures savings on energy and costs! The intelligent sensor system has an optional direction recognition and thereby makes sure that the door only opens when people are approaching or leaving. The door closes again immediately afterwards.

Dual field planar module

The second generation of Merkur is available with a radar field that is more symmetric and more sharply differentiated than before. Switching between wide or narrow field can be done by remote control or by push-buttons on the sensor. Thus, Merkur 2 is adjusted and ready to operate extremely quickly.



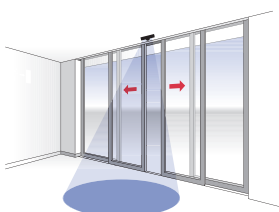
Your benefits

Versatile usable for every situation

- Pre-programmed comfort settings for a rapid commissioning
- The most reliable detection with a clearly differentiated radar field
- Energy-saving by direction recognition
- Avoidance of involuntary door openings by blanking-out of cross
- Electronically switching between a wide and a narrow field
- SMD+ as a new detection field for movements of < 5 cm/s

Field characteristics

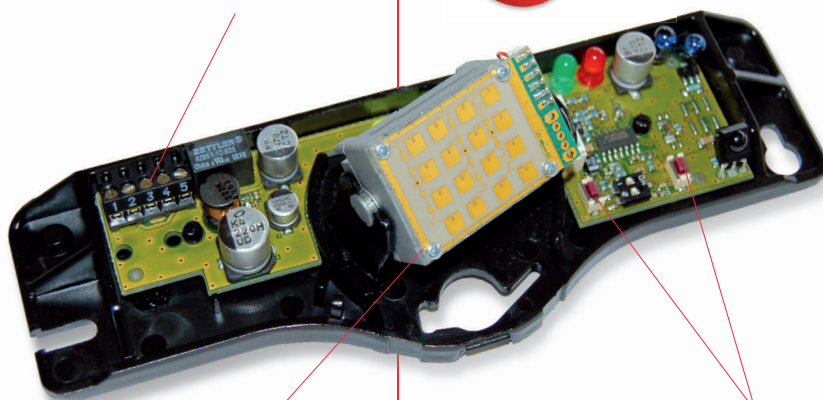
- Electronic field geometry settings options for a wide and narrow field (via remote control or via buttons at the detector)
- Can even be used with wide passage dimensions and high-level lights
- Mounting height up to 4 m



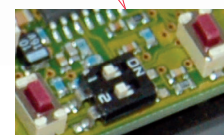
Optional plug-in screw terminal or RJ12 socket



Remote control for rapid commissioning and full range of settings



Radar module that is horizontally and vertically tiltable



Basic programming by using push-buttons on the sensor



Further accessories

High-quality accessories make the innovative Merkur 2 so versatile that it can be used in the most widely differing applications.



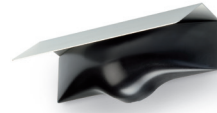
RegloBeam 2 remote control

Using this, the sensor can be rapidly configured and parameters can be individually adjusted for the respective situation



MIS ceiling installation kit

Using the MIS ceiling installation kit, the sensor can be discretely and almost invisibly built-in to the ceiling



MCAP rain and snow cover

The MCAP cover for external use protects the sensor against rain and snow



MCL semicircular adapter

The MCL adapter with its concave back provides a flat surface to mount the sensor on revolving and curved doors



Reliable in every application

Situation

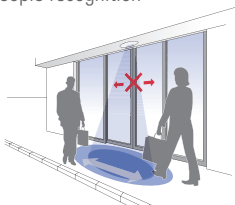
Activation of sliding doors, pedestrians on the pavement

Solution

- Ensures an optimal flow of people with reliable activation
- Intelligent movement detection: only activated when people directly come towards the door. Ideal for access in passages/on pavements

Benefits

- No unnecessarily opening/prolonged opening time of the door thanks to direction recognition
- The depth of the field can be reduced to a minimum and still the sensor ensures an optimal flow of people
- Field size up to a width of 5.0 m
- No involuntary opening of the door due to blanking-out of cross traffic/people recognition



Situation

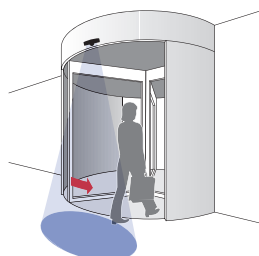
Activation of revolving doors

Solution

- With a special semicircular adapter, Merkur 2 can also be installed on revolving doors

Benefits

- Efficient blanking-out of cross traffic
- Small and precisely selectable detection field



Situation

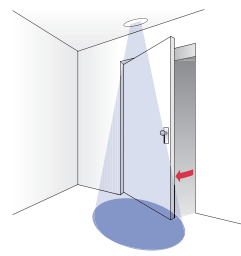
Activation of swing doors

Solution

- The sensor for automatic doors even in the most confined spaces

Benefits

- Thanks to the blanking-out of cross traffic, the door leaf is not detected and so the door is not triggered
- Especially suitable for ceiling installation



Situation

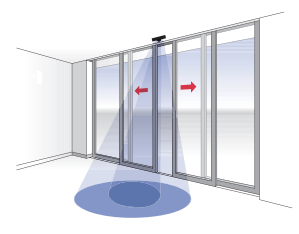
Installation in elderly and disabled homes

Solution

- Merkur 2 with a specially pre-programmed comfort setting

Benefits

- Even the very slowest-moving persons (< 5 cm/s) and those in wheelchairs are safely detected with the new SMD+ field
- Almost stationary objects are recognised in the detection field. The door stays open until the person has safely passed through



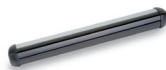
Order details

Item no.	Description	
Merkur 2 Standard		
219184	Merkur 2 Without direction recognition Changeover contact, Plug-in screw terminal	
219190	Merkur 2 ES With direction recognition Changeover contact, Plug-in screw terminal	
219193	Merkur 2 ES.C With direction recognition Changeover contact, RJ12 socket	
Accessories		
292393	Bi-directional remote control RegloBeam 2	
213459	Cover Merkur black	
213462	Cover Merkur white	
212840	MIS – ceiling installation kit	
212837	MCAP – rain and snow cover	
212527	MCL 1.0 – semicircular adapter for Merkur 2 TRL 687 black Door diameter 2.0–3.6 m 175 × 40 × 5.4 mm (W × H × T)	
212528	MCL 2.0 – semicircular adapter for Merkur 2 TRL 687 black Door diameter 3.6–6.0 m 175 × 40 × 3.7 mm (W × H × T)	

Additional products

UniScan

Infrared presence detector for automatic swing doors and revolving doors in accordance with EN 16005 and DIN 18650



PrimeFamily A

The complete solution for activating and protecting sliding doors in accordance with EN 16005 and DIN 18650



CleanSwitch

Contact-free switch for convenient activation of entrances with strict hygiene and design requirements



Technical specifications

Technological specifications

Technology	Double field radar module (24.125 GHz)
Transmitter power	< 20 dBm
Size of narrow field (at 2.2 m)	Min. 0.7 × 0.6 m (W × D) Max. 2.7 × 1.9 m (W × D)
Size of wide field (at 2.2 m)	Min. 1.1 × 0.6 m (W × D) Max. 4.7 × 1.7 m (W × D)

Mechanical specifications

Material	Cover: PC Base plate: ABS
Dimensions	176 × 62 × 52 mm (W × H × D)
Weight (without cable)	150 g

Electrical specifications

Voltage	12–36 V DC 12–28 V AC, 50 Hz
Operating current	Approx. 50 mA at 24 V DC, 24° C
Types of connections	Merkur 2, Merkur 2 ES Merkur 2 ES.C Plug-in screw terminal RJ12 plug

Specific specifications for Merkur 2 and Merkur 2 ES

Output	Potential-free changeover contact 48 V AC/DC Max. 0.5 A AC / max. 1 A DC Max. 60 VA / max. 30 W
---------------	--

Environmental conditions

Mounting height	Max. 4.0 m
Type of protection (EN 60529)	IP54
Operating temperature	–20° C up to +60° C
Humidity	Max. 90% relative, non-condensing

Standards

Immissions	EN 61000-6-1 EN 61000-6-2
Emissions	EN 61000-6-3 EN 61000-6-4

Note

Technical details and recommendations on our products are based upon experience and represent guidelines for the user. Details in brochures and specification sheets do not guarantee any special product features, apart from those which we confirm in individual cases. We reserve the right to make changes as the result of technical developments.

BBC Bircher Smart Access

Wiesengasse 20
8222 Beringen
Switzerland
Phone +41 52 687 11 11
info@bircher.com
www.bircher.com